



**PAYA**  
**Group**

0333 123 1243  
[www.payagroup.co.uk](http://www.payagroup.co.uk)  
[enquiries@payagroup.co.uk](mailto:enquiries@payagroup.co.uk)

# The Payter Family For Charities

P66 & Branding Options



Payter P66 can be used on countertops or wall-mounted to conserve space in any fundraising environment. Whether in a charity shop, in a foyer or on a fundraising stall, a fixed display is adaptable for a wide scope of charitable circumstances.

The Payter P66 device comes in 3 formats Countertop, Portable and Integrated which makes the device highly versatile. It can be used as a portable device for out and about fundraising, placed on counters in hospices or integrated into a wall mount or window display.

They can be fully custom branded to increase awareness of your organisation and encourage more impulse donations. Ideal for charities who want added presence as they fundraise.

Fitted with a roaming SIM card, you can connect to all major mobile networks. Should you be fundraising at a location with no signal, then the box will accept offline donations – which means that the transaction is stored within the device until signal is regained.



**Accredited  
For Unattended**



**Access to  
Online Portal**



**Gift Aid  
Compatible**



**Can Be Used With  
With JustGiving**



**Can Be Used With  
Charities Trust**



- Lightweight and easy to manage for your Volunteers and Donors. No pin required, just tap and go for a fast and safe donation.
- The Payter P66 can still be used offline without a phone signal. It will also store transactions if the mobile signal is weak.
- The portable Payter P66 device can be left unattended for in-store donations, creating a dedicated spot for 24/7 donations.
- The Payter P66 device can accept contactless transactions up to the value of £100.00. You can configure multiple donation amounts on the device for example £3,5,10.
- No cash means the Payter P66 can be used in public areas without the risk of theft.
- The Payter P66 doesn't need pairing with other devices to work, no logins required.
- The Payter P66 has both LAN and SIM connection to ensure quick processing of transactions no matter where you are.
- The Payter P66 has up to 8 hours of battery life and can be used all day. You can also charge the device overnight and connect to a power bank when needed.

The Payer P66 device can be fitted into a variety of impressive display units that give you the choice to style your fundraising efforts however you like.

These can be fully branded with eye-catching printed graphics or charity emblems. These display units can also be designed to feature a slot for cash donations, making them ideal for charities that want to continue collecting cash donations as well as contactless.

## SMALL BRANDING PLATE PORTABLE/TABLETOP

- Easy to use, intuitive.
- Just power on and go.
- Carry handle to the rear.
- Configure for single or multiple amounts up to £100.00.
- Simple button to change amount.
- Donations can be captured offline.
- Fast & secure, no cash to bank.
- Rechargeable battery that lasts up to 8 hours.



## LARGE BRANDING PLATE PORTABLE/TABLETOP

- Easy to use, intuitive.
- Just power on and go.
- Carry handle to the rear.
- Configure for single or multiple amounts up to £100.00.
- Simple button to change amount.
- Donations can be captured offline.
- Fast & secure, no cash to bank.
- Rechargeable battery that lasts up to 8 hours.



## PAYER WRAP

Easy to use acrylic housing unit designed to mount over the Payer Portable device. Easy to take off, the Payer Wrap allows you to turn your Payer Portable into a fixed display unit when you're not mobile.

- Designed for the Payer Portable.
- 280 degree display with printed graphics.
- Perfect for attracting 24/7 donations.
- Mains powered.
- Slips easily over the Payer Portable.
- Easily removable, easy to store when needed.
- Turns the Payer Portable into a fixed donation point when required.



## PAYER FIXED

- Great size with eye-catching printed graphics.
- Perfect for attracting 24/7 donations.
- Low cost, easy to replace branding.
- Pre-drilled holes to the rear for wall mounting.
- Mains powered.
- LAN connection into your broadband router OR GPRS connectivity (includes SIM).
- Designed to house contactless card reader.



## ALPINE XL

- Floor standing, wooden construction.
- Light Oak veneer finish.
- Other wood colours available.
- Rear door with lock and 2 keys.
- Clear acrylic panel which can be branded.
- 100cm H x 34.3cm W x 34.3cm D
- With Header: 140cm H
- Designed to house contactless card reader.



## EXECUTIVE ARMOUR

- Floor standing, sheet steel construction.
- White as standard.
- Colour matching available for larger orders.
- Can be adapted to incorporate a tablet.
- Rear door at with lock and 2 keys.
- 100cm H x 34.3cm W x 34.3cm D
- With Header: 140cm H
- Designed to house contactless card reader.



## CUSTOM STANDING DISPLAYS

### CONTACT OUR CUSTOMER SERVICES TEAM FOR A QUOTE

- The Payter P66 device can be housed in a multitude of custom displays.
- Displays can be adapted to incorporate a tablet for extra video and interactive branding.
- Custom displays can be adapted to use a car battery to power the device without needing to connect to the mains.



## Device Comparison

Compare devices by feature to choose the best option for your individual needs.

	PAYTER P66	A920	A920 PRO	A77	A50	IM30
Recurring Donation Requests	●	●	●	●	●	●
Touch Screen Display		●	●	●	●	●
Integrated Branding		●	●	●	●	●
LAN Connection	●					●
SIM Connection	●	●	●	●	●	●
Wi-Fi Enabled		●	●	●	●	●
Interchangeable Battery						
Replaceable Parts						
Long Term Hire Option	●	●	●	●	●	●
Short Term Hire Option	●	●	●			
Purchase & Service Option	●	●	●	●	●	●
Apple Pay & Google Pay Acceptance	●	●	●	●	●	●
American Express Acceptance	●	●	●	●	●	●
Online Transactions	●	●	●	●	●	●
Offline Transactions*	●	●	●	●	●	●
Chip & Pin Payments		●	●	●	●	●
Magstripe Payments		●	●	●		●
Standalone Capability	●					●
Ready To Use From The Box	●					

\*Gateway Dependent

## PAYA Group Services

- We manage the application for your merchant account.
- We set-up your Merchant Portal and allow you to track your donations.
- We supply the contactless donation boxes.
- We provide UK based on-going support.

## Single Provider. Merchant Account. Merchant Portal. UK Support.

PAYA Group provides everything you need in one place, making it easier to set-up and manage your services and avoiding the complexity of multiple suppliers.

In addition to the latest technology, we offer a choice of device types, free set-up and an Merchant Portal to manage your services, transactions, box settings and campaigns in real-time.

## 100% Online Application

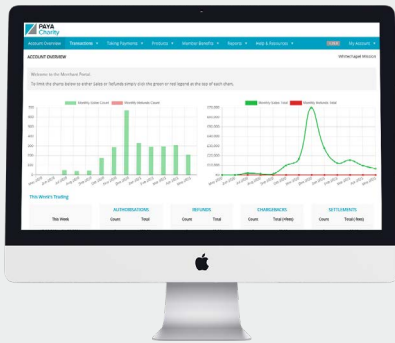
To get set started with Contactless Donations, visit our website and apply for a Merchant Account. The application is 100% online and there are no set up fees to pay.

Once we've approved your application, we'll contact you to arrange the delivery of your contactless donation boxes.

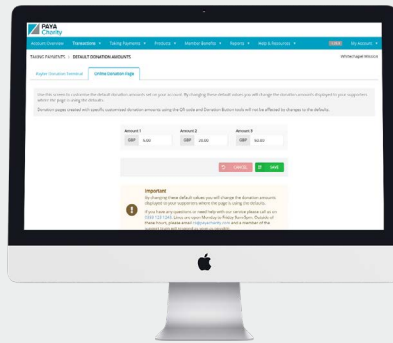
## Merchant Portal Features & Benefits

Once you have set up a PAYA Group account, you will be given access to the Merchant Portal. The Merchant Portal allows you to monitor the progress of your contactless devices and the donations you receive.

Your donations are also viewable in graph and table form, giving you a quick visual summary of your transaction worth each month. Transaction statements can also be downloaded for use in reports and PR.



Track the performance of your donation boxes in real-time, adapting your campaign strategy to achieve optimal results.



Manage contactless box settings online. View transactions, order products, reconcile statements and more.

**Benefit from higher Volume, Higher Value Donations Today!**





**PAYA  
Group**

0333 123 1243  
[www.payagroup.co.uk](http://www.payagroup.co.uk)  
[enquiries@payagroup.co.uk](mailto:enquiries@payagroup.co.uk)

## Contact us for more information

0333 123 1243  
[www.payagroup.co.uk](http://www.payagroup.co.uk)  
[enquiries@payagroup.co.uk](mailto:enquiries@payagroup.co.uk)



 **PAYA  
CardServices**

 **PAYA  
Charity**

 **PAYA  
ITS**

 **PAYA  
LibertyPay**

 **PAYA  
QixPay**

0333 123 1243  
[www.payagroup.co.uk](http://www.payagroup.co.uk)  
[enquiries@payagroup.co.uk](mailto:enquiries@payagroup.co.uk)

 **PAYA  
Group**